

Mobile Pay Plus Get Started Guide

For Android™ Devices

Version 2.3

April 2017

First Data®

Table of Contents

Introduction 3

 Supported Devices 4

Pairing Your Android Device 5

Setting iCMP COM Port17

Standby and ECO Mode (Auto Power-Off) Timers 20

 Setting Standby and ECO Mode Timer Values..... 20

Powering Off When Not In Use 26

Tips..... 27

Quick Steps..... 28

Introduction

This guide explains how to connect your *First Data Mobile Pay Plus* PIN pad to your Android device, and how to prepare the iCMP to work with the Mobile Pay Plus application.



Before starting the pairing process and using your PIN pad, call 888-472-6944 to activate. You will need your PIN pad serial number (decal on back of device) and TID (included in the documentation that came with your device).



For Apple devices, see “Get Started Guide – For Apple® Devices” on the [Mobile Pay Plus](#) support page.

The PIN pad uses Bluetooth to connect to your device. Connecting devices using Bluetooth is called “pairing”. For detailed information about third-party Bluetooth features of your Android device, see your manufacturer’s website site or consult your device user guide.

The PIN pad is an Ingenico iCMP. The hardware guide included with your device provides basic care and use information. For more information on caring for your iCMP, see [Ingenico’s Support Site](#).



Please read and familiarize yourself with all instructions in this guide before starting the process. **Some steps are time-sensitive**, so you will find the process quicker and easier if you are prepared before starting.

You may find it easier to perform pairing in an area away from other Bluetooth devices. If this is not possible, turn off any other Bluetooth devices that are nearby.

You may find it easier to perform pairing with the Auto-Lock disabled on your device. Refer to your manufacturer’s website site or consult your device’s user guide for information on disabling Auto-Lock.

At the end of this guide, you will find a “Quick Steps Reference”. If you are confident in your skills, you may use this chart to quickly perform the pairing process.

If you are unable to successfully connect your devices using this guide, you can call 888-472-6944 or e-mail firstdata.northamerica@bambora.com for help.

Supported Devices

Most phone devices running Android version 4.1.x or higher are compatible with Mobile Pay Plus for Android.

Tablet devices may not properly support the graphics of Mobile Pay Plus for Android, and are therefore not supported. Using Mobile Pay Plus on a tablet is at the user's risk.



Android devices are manufactured by many different companies, and Android itself may be customized for each manufacturer or model. As such, your experiences may differ from those in this guide, and screen shots and depictions in this guide may not match your device.

Pairing Your Android Device



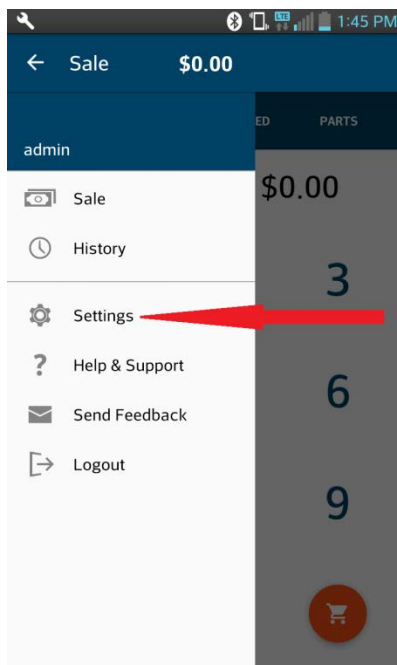
Some steps in this section are time-sensitive, so you will find the process quicker and easier if you are prepared by reviewing them before starting.



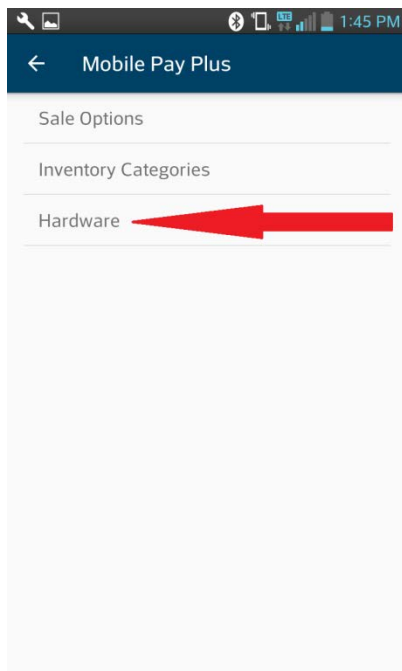
If the iCMP is idle for too long, it will go into Standby Mode, and display the “Ingenico Beyond Payment” logo. Press and release (don’t hold) the power/reset button on the side of the iCMP and it will wake up again.

Before Mobile Pay Plus can see your pinpad, it must be paired to your device using Bluetooth.

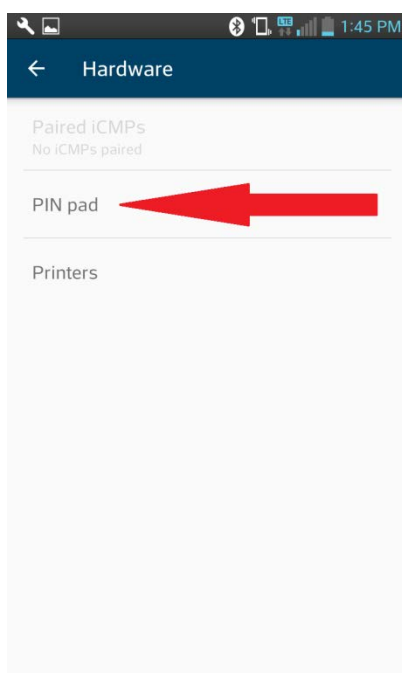
1. Login in to the Mobile Pay Plus app using the credentials provided to you.
2. On the main screen, tap **Settings**



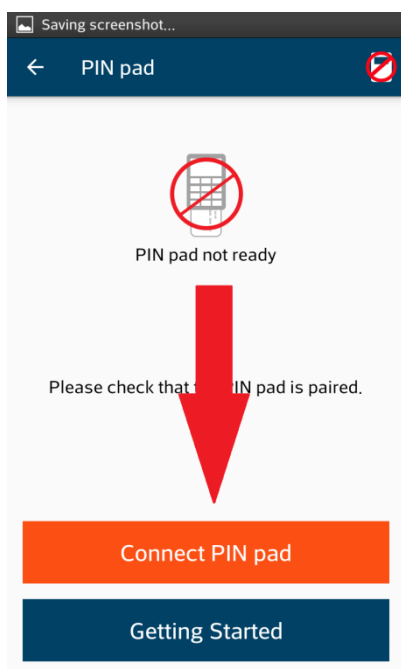
3. On the Settings menu, tap **Hardware**



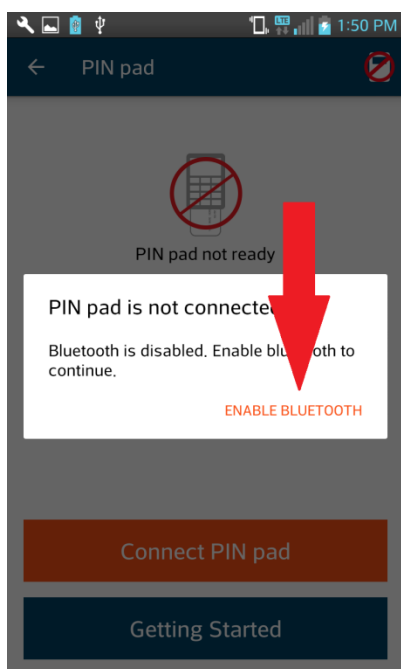
4. On the Hardware menu, tap **PIN pad**



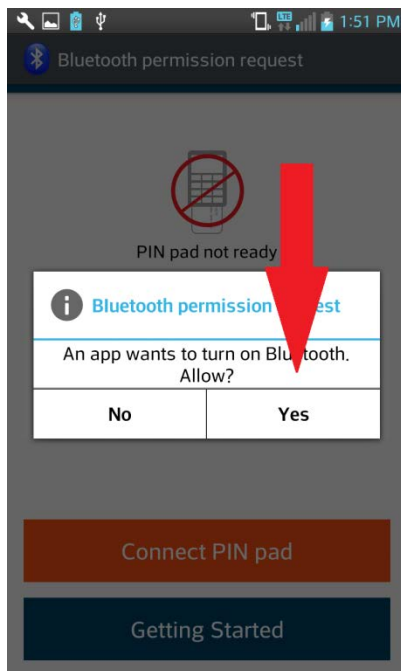
5. On the PIN pad menu, tap **Connect PIN pad**



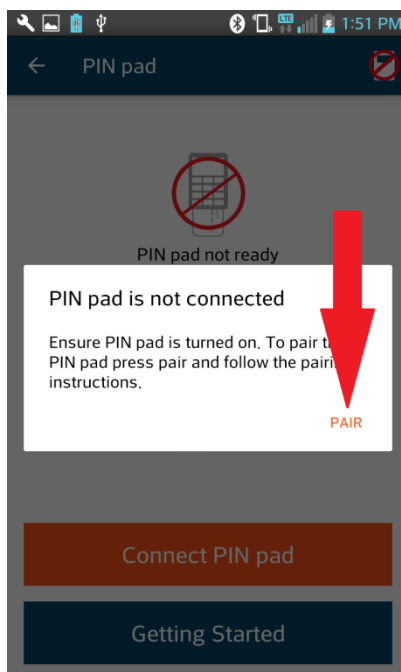
6. If Bluetooth is not turned on, you will be prompted to turn it on, tap **ENABLE BLUETOOTH**



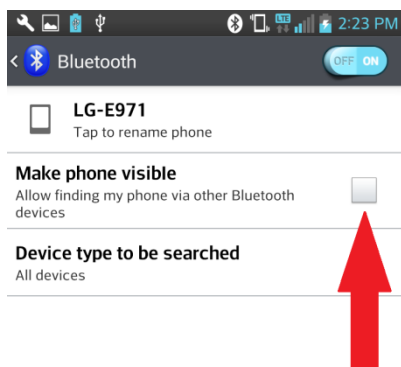
Then tap **Yes**



7. You will now be prompted to start the pairing process, tap **PAIR**



8. You will now be directed to the Bluetooth settings screen on your device. Tap **Make phone visible**



Your device may not require turning anything on to make it Bluetooth visible.



Once Bluetooth visible, the device only stays visible for a fixed amount of time, you may have to select Make Phone Visible again if it times out before you are ready with the iCMP pinpad steps in the next section of this document.



If you have not disabled **Auto-Lock**, you may have to occasionally tap your device's screen to keep the Bluetooth settings screen displayed.

9. Turn on the iCMP PIN pad by pressing the reset/power on button on the right side.



10. **This is a time-sensitive step!** The iCMP PIN Pad will cycle through a few messages as it boots.

When it gets to the main screen (shown below), you must press the **F** within 5 seconds while the “?” is still displayed (there is an arrow pointing to it below).



If you do not press the **F** quickly enough and miss the “?”, the “?” will change to an “F”. You will need to return to step 1 above and try again.

11. You are now in the **FUNCTIONS** menu. Select item 4 (**4 - BT PAIRING**).



There are two ways to select a menu item:

- Press the number key associated with the selection
- OR -
- Press the **F2** key to scroll up or the **F3** key to scroll down the menu and highlight a menu option, then press the green key.



12. You are now in the **BT PAIRING** menu. Select item 1 (**1 - Pair device (Android)**).

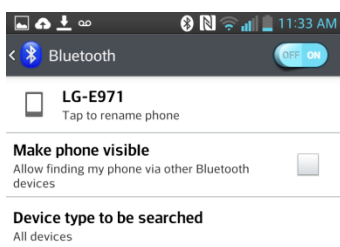


Ensure your Android device is displaying the **Bluetooth** settings screen prior to pressing "1". Refer to the Preparing Your Android Device to be Paired section above for more information.

13. You are now on the Waiting for pairing.... screen.



14. In the Bluetooth Settings screen on your Android device, tap **Search for Devices**

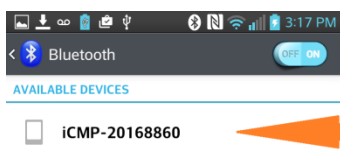


Your device may not require you to tap Search for Devices, it may search automatically, depending on your software version.



Your device may refer to Scan for Devices, depending on your software version. This is the same function as Search for Devices.

15. The iCMP will show up as an available device. Tap the name of the iCMP.



The actual name of your iCMP PIN pad is unique to you, so the number displayed will differ from the above image.

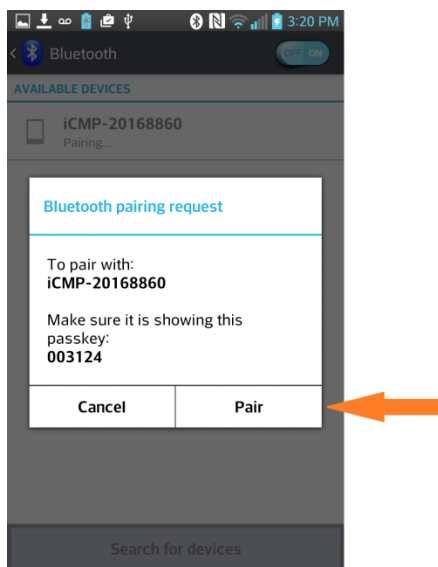


Your device may display additional information with the device name, depending on the software version. This information is not important to the iCMP pairing process.

16. The iCMP will now start the pairing process



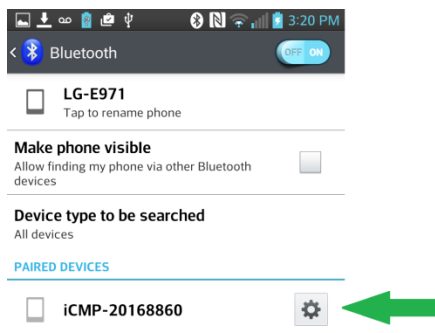
17. Your device will now display a message requesting pairing with the iCMP. Tap **Pair**



18. On the iCMP PIN pad, press .




19. Your Android device and the iCMP are now paired. Your Android device's screen will look similar to the image below.



Search for devices



The actual name of your iCMP PIN pad is unique to you, so the number displayed will differ from the above image.

20. On the iCMP PIN Pad, press  to exit the **BT PAIRING** menu and return to the main screen.



Setting iCMP COM Port

The iCMP comes configured to use the RS232 COM port. Mobile Pay Plus for Android requires the iCMP to use the Ethernet COM port. The following steps will guide you through changing the COM port to Ethernet.



If the iCMP is idle for too long, it will go into Standby Mode, and display the "Ingenico Beyond Payment" logo. Press and release (don't hold) the power/reset button on the side of the iCMP and it will wake up again.

1. Turn on the iCMP PIN pad by pressing the reset/power on button on the right side.



2. **This is a time-sensitive step!** The iCMP PIN Pad will cycle through a few messages as it boots.

When it gets to the main screen (shown below), you must press the [Teal Key] within 5 seconds while the "?" is still displayed (there is an arrow pointing to it below).




If you do not press the [Teal Key] quickly enough and miss the "?", the "?" will change to an "F". You will need to return to step 1 above and try again.



3. You are now in the first settings screen. Press **F4** until you see **COM PORT**



If you miss the COM PORT settings screen, just keep pressing **F4** until it appears again.

4. You are now in the COM PORT settings screen. Press  until you see **ETHERNET**



If you miss the **ETHERNET** setting, just keep pressing  until it appears again.

5. To save the COM PORT setting, press 



6. You are now at the main boot up screen, and the iCMP is ready for use with Mobile Pay Plus



Standby and ECO Mode (Auto Power-Off) Timers

If the pinpad is idle for a period of time, it will go into Standby Mode, displaying the Ingenico logo and disabling the keypad and other power-consuming features. The pinpad will automatically return to normal operating mode if you perform a transaction through the app, or if you quickly press and release the reset power button on the side. The iCMP comes shipped with a very low standby time value.

If the pinpad is idle for a period of time, it will shut off automatically (ECO Mode). To resume normal operating mode, the pinpad must be turned on again. The iCMP comes shipped with a 10 minutes ECO Mode value.

Setting Standby and ECO Mode Timer Values

1. Turn on the iCMP PIN pad by pressing the reset/power on button on the right side.



2. **This is a time-sensitive step!** The iCMP PIN Pad will cycle through a few messages as it boots.

When it gets to the main screen (shown below), you must press the **F** within 5 seconds while the “?” is still displayed (there is an arrow pointing to it below).




If you do not press the **F** quickly enough and miss the “?”, the “?” will change to an “F”. You will need to return to step 1 above and try again.

3. You are now in the **FUNCTIONS** menu. Select item 0 (0 - **TELIUM MANAGER**).



There are two ways to select a menu item:

- Press the number key associated with the selection
- OR -
- Press the **F2** key to scroll up or the **F3** key to scroll down the menu and highlight a menu option, then press the green  key.



4. You are now in the **TELIUM MANAGER** menu. Select item 3 (3 - **INITIALIZATION**).



5. You are now in the **INITIALIZATION** menu. Select item 2 (2 - **HARDWARE**).




6. You are now in the **CONFIGURATION** menu. Select item 1 (1 - **BATTERY SETUP**).



7. You are now in the **BATTERY SETUP** menu. Select item 1 (1 - **STANDBY DELAY**).




8. You are now in the **STANDBY DELAY** screen. This value determines how quickly the iCMP, when idle, will go into Standby Mode. Using the keypad, enter the desired value of the timer. The value is in seconds. In the example, the timer is being set to 5 minutes (300 seconds). When you have finished entering the desired value, press the  key.



Setting the Standby Delay value to 2147483647 disables Standby Mode. This is not recommended, as it may result in premature battery depletion.


9. You are now back to the **BATTERY SETUP** menu. Select item 2 (2 – **ECO MODE**).



10. You are now in the **ECO MODE** screen. This value determines how quickly the iCMP, when idle, will shut off automatically. Using the keypad, enter the desired value of the timer. The value is in seconds. You may set the value to a time that suits your usage patterns. In the example, the timer is being set to 60 minutes (3600 seconds). When you have finished entering the desired value, press the  key.



Setting the ECO Mode value to 0 (zero) disables ECO Mode. This is not recommended, as it may result in premature battery depletion.

11. You are now back to the **BATTERY SETUP** menu. Press the  key twice to return to the main iCMP display.



Powering Off When Not In Use

To maximize battery life of your iCMP PIN pad, it is recommended that you power it off whenever it is not going to be used for an extended period of time. The iCMP will go to sleep and eventually shut off by itself, but when you know you won't be using it, it is good practice to power it off.

To power off your iCMP PIN pad, press  and the  at the same time. Your PIN pad will power off.



If the iCMP is in Standby Mode (displaying the “Ingenico Beyond Payment” logo), press and release (don't hold) the power/reset button on the side of the iCMP and it will wake up again, and you can proceed with the power off procedure. The power off procedure will not work while the device is in Standby Mode.

Tips



Always have your device (phone) powered up and fully booted prior to turning on the iCMP.



To preserve battery life, follow the instructions in this guide to set the sleep timer and auto-power-off timer to values that suit your frequency of use.



To preserve battery life, always power off the iCMP when you do not plan to use it for a long period of time.



The iCMP will gradually lose battery power during long periods (days) of storage, even if it is turned off. Be prepared and charge the iCMP prior to using it again.



Like any rechargeable battery, the battery in the iCMP will not deliver sufficient power when it is cold (less than 5 degrees Celsius). For best performance, warm the iCMP up prior to use when it is cold.



Do not attempt to charge the iCMP when it is extremely cold (less than 5 degrees Celsius). Warm the iCMP up before charging it.

Quick Steps

Device	Action	Note
Bluetooth Pairing		
Android	Settings	
Android	Bluetooth	
Android	On	If necessary (Bluetooth not already turned on)
iCMP	Reset	
iCMP	F Key	While "?" is displayed on iCMP
iCMP	4	BT Pairing
iCMP	1	Pair Device (Android)
Android	Search Devices	Find iCMP
Android	ICMP-NNNNNNNN	Press the ICMP device in the list
Android	Pair	Press "Pair" on dialogue box
iCMP	Green	Press green button
iCMP	Red	Press red button
Android	Exit	Press home button to exit Settings
COM PORT Setting		
iCMP	Reset	
iCMP	Green Key	While "?" is displayed on iCMP
iCMP	F4 Key	Until COM PORT setting appears
iCMP	Yellow Key	Until ETHERNET appears
iCMP	Green Key	Exit to boot screen
Standby and ECO Mode Times		
iCMP	Reset	
iCMP	F Key	While "?" is displayed on iCMP
iCMP	0	Telium Manager
iCMP	3	Initialization
iCMP	2	Hardware
iCMP	1	Battery Setup
iCMP	1	Standby Delay
iCMP	<value>	Enter desired value in seconds using keypad
iCMP	Green Key	Back to Battery Setup
iCMP	2	ECO Mode
iCMP	<value>	Enter desired value using keypad
iCMP	Green Key	Back to Battery Setup
iCMP	Red Key	Enter desired value in seconds using keypad