

Mobile Pay Plus Get Started Guide

For Apple® Devices

Version 2.2

April 2017

First Data®

Table of Contents

Introduction 3

 Supported Devices 3

Preparing Your Apple Device to be Paired 4

Pairing Your Apple Device 6

Standby and ECO Mode (Auto Power-Off) Timers 13

 Setting Standby and ECO Mode Timer Values 13

Powering Off When Not In Use 20

Re-Connecting Your Devices 21

Tips 22

Quick Steps 23

Introduction

This guide explains how to connect your *First Data Mobile Pay Plus* PIN pad to your Apple device.



Before starting the pairing process and using your PIN pad, call 888-472-6944 to activate. You will need your PIN pad serial number (decal on back of device) and TID (included in the documentation that came with your device).



For Android devices, see “Get Started Guide – For Android® Devices” on the [Mobile Pay Plus](#) support page (*coming soon*).

The PIN pad uses Bluetooth to connect to your device. Connecting devices using Bluetooth is called “**pairing**”. For detailed information about third-party Bluetooth features of your Apple device, see [Apple's Support Site](#).

The PIN pad is an Ingenico iCMP. The hardware guide included with your device provides basic care and use information. For more information on caring for your iCMP, see [Ingenico's Support Site](#).



Please read and familiarize yourself with all instructions in this guide before starting the process. **Some steps are time-sensitive**, so you will find the process quicker and easier if you are prepared before starting.

You may find it easier to perform pairing in an area away from other Bluetooth devices. If this is not possible, turn off any other Bluetooth devices that are nearby.

You may find it easier to perform pairing with the Auto-Lock disabled on your device. Go to Settings>General>Auto-Lock and select “Never”.

At the end of this guide, you will find a “Quick Steps Reference”. If you are confident in your skills, you may use this chart to quickly perform the pairing process.

If you are unable to successfully connect your devices using this guide, you can call 888-472-6944 or e-mail firstdata.northamerica@bambora.com for help.

Supported Devices

Supported Apple devices include iPhone, iPod Touch, iPad and iPad Mini. Your device must support and be running iOS 7 or higher to be compatible with the PIN pad. For more information on iOS versions and device compatibility, see [Apple's Support Site](#).

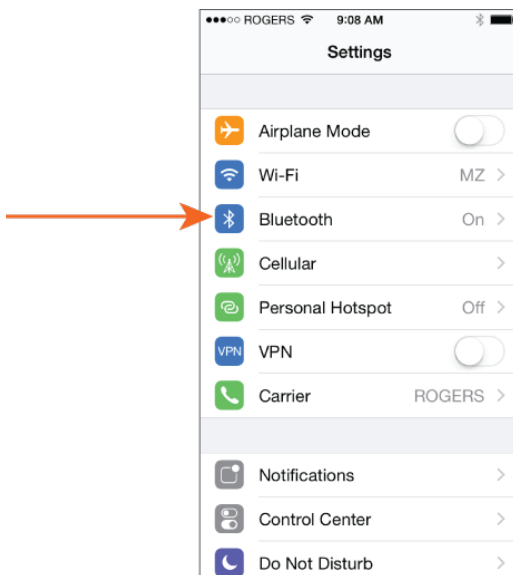
Preparing Your Apple Device to be Paired

Bluetooth must be enabled on your Apple device before you can pair it with the iCMP PIN pad.

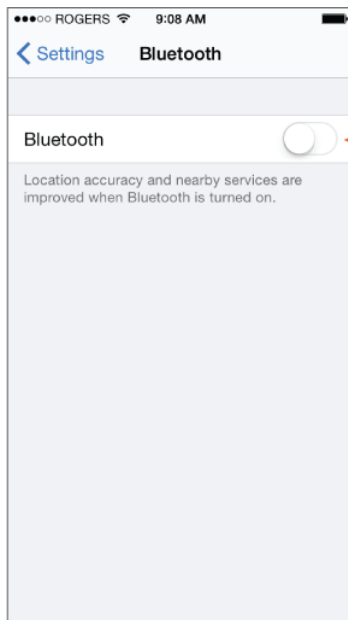
1. On your device, tap **Settings**.



2. In Settings, tap **Bluetooth**.



If Bluetooth is not turned on (green), tap the button to turn Bluetooth on (will turn green). Your Apple device searches for nearby Bluetooth devices while Bluetooth is on and the Bluetooth settings screen is displayed.

Bluetooth Off**Bluetooth On**

If you have not disabled **Auto-Lock**, you may have to occasionally tap your device's screen to keep the Bluetooth settings screen displayed.

Pairing Your Apple Device



Some steps in this section are time-sensitive, so you will find the process quicker and easier if you are prepared by reviewing them before starting.



If the iCMP is idle for too long, it will go into Standby Mode, and display the “Ingenico Beyond Payment” logo. Press and release (don’t hold) the power/reset button on the side of the iCMP and it will wake up again.

1. Turn on the iCMP PIN pad by pressing the reset/power on button on the right side.



2. **This is a time-sensitive step!** The iCMP PIN Pad will cycle through a few messages as it boots.

When it gets to the main screen (shown below), you must press the **F** within 5 seconds while the “?” is still displayed (there is an arrow pointing to it below).



If you do not press the **F** quickly enough and miss the “?”, the “?” will change to an “F”. You will need to return to step 1 above and try again.




3. You are now in the **FUNCTIONS** menu. Select item 4 (**4 - BT PAIRING**).

NOTE: Press the F2 key to scroll to the **4 - BT PAIRING** menu item as does not appear on the screen.



There are two ways to select a menu item:

- Press the number key associated with the selection
- OR -
- Press the **F2 key to scroll up** or the **F3 key to scroll down** the menu and highlight a menu option, then press the green  key.



4. You are now in the **BT PAIRING** menu. Select item 2 (**2 - Pair device (iOS)**).



5. You are now on the **AVAILABLE DEVICES** menu. Select item **0 - Search devices**.



Ensure your Apple device is displaying the **Bluetooth** settings screen prior to pressing “o”. Refer to the Preparing Your Apple Device to be Paired section above for more information.



The iCMP PIN pad will search for your device.



6. Your Apple® device's name should now be listed on the iCMP PIN pad's screen.
In the example below, our Apple device is named "WLM 5c #1".



If your Apple device was not on the **Bluetooth** settings screen when you performed Step 5, the device's name will not appear. Follow the Preparing Your Apple Device to be Paired section, then **press zero** again when you Apple device is displaying its **Bluetooth** settings.

You can find your Apple device name by going to **Settings> General> About> Name**.



7. Select your Apple device.



There are two ways to select your device:

Press the number key associated with your device on the **AVAILABLE DEVICES** menu.

- OR -

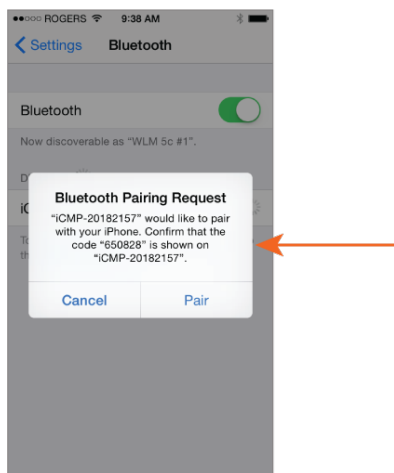
Press the **F2** key to scroll up or the **F3** key to scroll down the menu to highlight your device, then press the green key to select it.



The iCMP PIN pad will start the pairing process.



8. Your Apple device should now display a message similar to the one below. Press **Pair**.

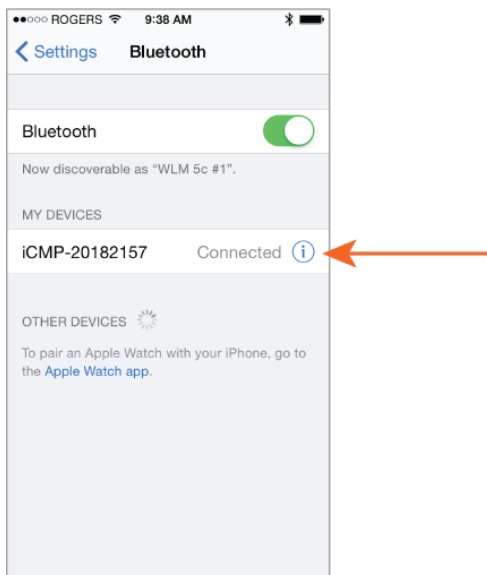


The iCMP may appear as "Cordless Phone" on your Apple Device during pairing, depending on your software version. This is normal, and the iCMP will identify itself correctly once pairing is complete.


9. On the iCMP PIN pad, press .



10. Your Apple device and the iCMP are now paired. Your Apple device's screen will look similar to the image below.



The actual name of your iCMP PIN pad is unique to you, so the number displayed will differ from the above image.

11. On the iCMP PIN Pad, press  to exit the **BT PAIRING** menu and return to the main screen.



Standby and ECO Mode (Auto Power-Off) Timers

If the pinpad is idle for a period of time, it will go into Standby Mode, displaying the Ingenico logo and disabling the keypad and other power-consuming features. The pinpad will automatically return to normal operating mode if you perform a transaction through the app, or if you quickly press and release the reset power button on the side. The iCMP comes shipped with a very low standby time value.

If the pinpad is idle for a period of time, it will shut off automatically (ECO Mode). To resume normal operating mode, the pinpad must be turned on again. The iCMP comes shipped with a 10 minutes ECO Mode value.

Setting Standby and ECO Mode Timer Values

1. Turn on the iCMP PIN pad by pressing the reset/power on button on the right side.



2. **This is a time-sensitive step!** The iCMP PIN Pad will cycle through a few messages as it boots.

When it gets to the main screen (shown below), you must press the **F** within 5 seconds while the “?” is still displayed (there is an arrow pointing to it below).



If you do not press the **F** quickly enough and miss the “?”, the “?” will change to an “F”. You will need to return to step 1 above and try again.

3. You are now in the **FUNCTIONS** menu. Select item 0 (0 - **TELIUM MANAGER**).



There are two ways to select a menu item:

- Press the number key associated with the selection
- OR -
- Press the **F2** key to scroll up or the **F3** key to scroll down the menu and highlight a menu option, then press the green key.



4. You are now in the **TELIUM MANAGER** menu. Select item 3 (3 - **INITIALIZATION**).



5. You are now in the **INITIALIZATION** menu. Select item 2 (2 - **HARDWARE**).




6. You are now in the **CONFIGURATION** menu. Select item 1 (1 - **BATTERY SETUP**).



7. You are now in the **BATTERY SETUP** menu. Select item 1 (1 - **STANDBY DELAY**).




8. You are now in the **STANDBY DELAY** screen. This value determines how quickly the iCMP, when idle, will go into Standby Mode. Using the keypad, enter the desired value of the timer. The value is in seconds. In the example, the timer is being set to 5 minutes (300 seconds). When you have finished entering the desired value, press the  key.



Setting the Standby Delay value to 2147483647 disables Standby Mode. This is not recommended, as it may result in premature battery depletion.


9. You are now back to the **BATTERY SETUP** menu. Select item 2 (2 – **ECO MODE**).



10. You are now in the **ECO MODE** screen. This value determines how quickly the iCMP, when idle, will shut off automatically. Using the keypad, enter the desired value of the timer. The value is in seconds. You may set the value to a time that suits your usage patterns. In the example, the timer is being set to 60 minutes (3600 seconds). When you have finished entering the desired value, press the  key.



Setting the ECO Mode value to 0 (zero) disables ECO Mode. This is not recommended, as it may result in premature battery depletion.

11. You are now back to the **BATTERY SETUP** menu. Press the  key twice to return to the main iCMP display.



Powering Off When Not In Use

To maximize battery life of your iCMP PIN pad, it is recommended that you power it off whenever it is not going to be used for an extended period of time.

To power off your iCMP PIN pad, press  and the  at the same time. Your PIN pad will power off.



If the iCMP is in Standby Mode (displaying the "Ingenico Beyond Payment" logo), press and release (don't hold) the power/reset button on the side of the iCMP and it will wake up again, and you can proceed with the power off procedure. The power off procedure will not work while the device is in Standby Mode.

Re-Connecting Your Devices

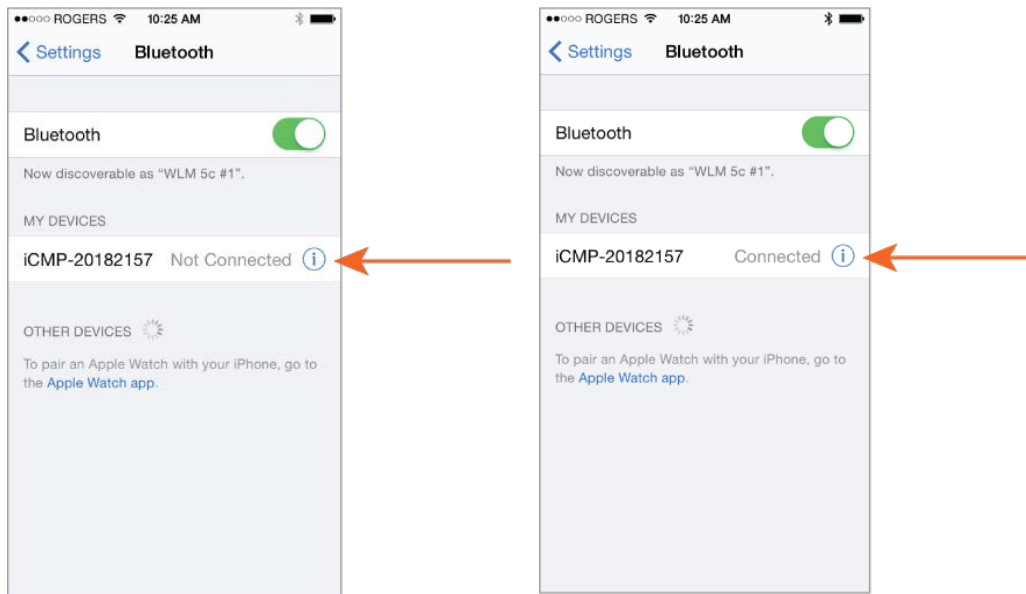
If your PIN pad loses the Bluetooth connection to your Apple device, you may have to re-connect them manually.

To reconnect your devices:

On your Apple device, go to **Settings** > **Bluetooth** and then tap on the name of your PIN pad.

The status of your PIN pad will change from **Disconnected** to **Connected** as seen below.

Your PIN pad will now be ready to use with the *Mobile Pay Plus* app again.



Tips



Always have your device (iPhone, iPod Touch, iPad) powered up and fully booted prior to turning on the iCMP.



To preserve battery life, follow the instructions in this guide to set the sleep timer and auto-power-off timer to values that suit your frequency of use.



To preserve battery life, always power off the iCMP when you do not plan to use it for a long period of time.



The iCMP will gradually lose battery power during long periods (days) of storage, even if it is turned off. Be prepared and charge the iCMP prior to using it again.



Like any rechargeable battery, the battery in the iCMP will not deliver sufficient power when it is cold (less than 5 degrees Celsius). For best performance, warm the iCMP up prior to use when it is cold.



Do not attempt to charge the iCMP when it is extremely cold (less than 5 degrees Celsius). Warm the iCMP up before charging it.

Quick Steps

Device	Action	Note
Pairing		
Apple	Settings	
Apple	Bluetooth	
Apple	On	If necessary (not already turned on)
iCMP	Reset	
iCMP	F Key	While "?" is displayed on iCMP
iCMP	4	BT Pairing
iCMP	2	Pair iOS Device
iCMP	0	Search Devices
iCMP	Select Device	Press number key associated with Apple device
Apple	Pairing	Press "Pairing" on dialogue box
iCMP	Green	Press green button
iCMP	Red	Press red button twice
iCMP	Red	
Apple	Exit	Press home button to exit Settings
Standby and ECO Mode Times		
iCMP	Reset	
iCMP	F Key	While "?" is displayed on iCMP
iCMP	0	Telium Manager
iCMP	3	Initialization
iCMP	2	Hardware
iCMP	1	Battery Setup
iCMP	1	Standby Delay
iCMP	<value>	Enter desired value in seconds using keypad
iCMP	Green Key	Back to Battery Setup
iCMP	2	ECO Mode
iCMP	<value>	Enter desired value using keypad
iCMP	Green Key	Back to Battery Setup
iCMP	Red Key	Enter desired value in seconds using keypad